

Daily Derivatives & Market Report

CONTENTS

Page No.	Particulars
2	Market Summary
3	Nifty Futures – Derivatives Snap
4	Bank Nifty Futures – Derivatives Snap
5	Activity in Nifty Options
6	What do Nifty Technical suggest
7	Derivative Analysis
8	Disclaimer

Index Trend Analysis

Pivot(Daily)	Close	S2	S1	Pivot	R1	R2	Daily	Weekly	Monthly
Nifty	10115	10040	10077	10143	10180	10245	Sell	Sell	Sell
Sensex	33006	32765	32886	33084	33204	33402	Sell	Sell	Sell
Nifty Futures	10116	10027	10071	10155	10199	10282	Sell	Sell	Sell
Bank Nifty	24142	23964	24053	24184	24272	24403	Sell	Sell	Sell
CNX IT	12490	12343	12416	12528	12601	12712	Sell	Sell	Sell

Market Summary

Domestic Indices	Close	Points	% Chg
SENSEX	33006.3	-129.9	-0.4
NIFTY	10114.8	-40.5	-0.4
MIDCAP	15910.7	-121.0	-0.8
SMLCAP	17064.1	-180.3	-1.1
BSEFMC	10253.7	-37.4	-0.4
AUTO	23893.4	-226.0	-0.9
POWER	2131.5	-14.2	-0.7
REALTY	2296.6	-29.8	-1.3
BSE IT	12151.1	-112.1	-0.9
BANSEX	27075.5	-180.1	-0.7
OILGAS	14622.6	-42.6	-0.3
METAL	13465.5	49.4	0.4

Currency Futures	Close	Pre. Pts	% Chg
26-Mar-18 EUR-INR	80.21	80.13	0.11
26-Mar-18 USD-INR	65.13	65.26	-0.20
26-Mar-18 GBP-INR	92.16	91.75	0.44
26-Mar-18 JPY-INR	61.65	61.35	0.48

Advance/ Decline	Adv	Dec	Un Ch.
NSE	330	1194	34
BSE	706	2013	139

FII/DII Capital Mkt*	Buy	Sell	Net
FII	5225	5064	161
DII	3692	3282	410

*NOTE: - FII AND DII data figure is provisional

Market Commentary

Thursday turned out to be a dismal day of trade for Indian equity markets with frontline gauges ending the session with a cut of around half a percent, after the US Federal Reserve raised interest rates while retaining its view for three hikes this year. In its first policy meeting under new Fed chief Jerome Powell, the US central bank indicated that inflation should finally move higher after years below its 2% target and that the economy had recently gained momentum. Markets, however, started the session on an optimistic note as traders took some encouragement with report that private equity (PE) investments witnessing a two-fold jump in February with transactions worth \$1.3 billion taking the deal tally for the first two months of this year to \$2.3 billion. There were 62 PE deals worth \$1,330 million, while in the corresponding period last year there were 45 such transactions worth \$588 million. Meanwhile, the Union Cabinet has given its approval for revision of the agreement between India and Qatar for the avoidance of double taxation and for the prevention of fiscal evasion with respect to taxes on income.

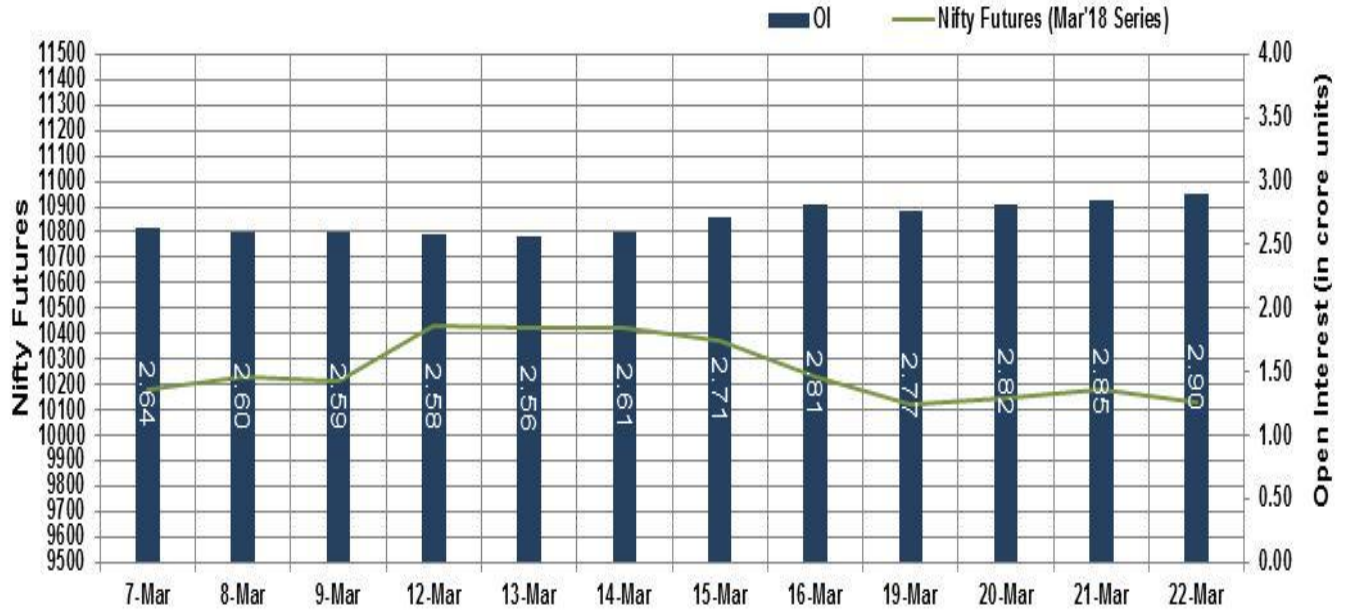
Weakness in European markets too dampened sentiments, as German business confidence deteriorated for the second consecutive month but remained at an overall high level, suggesting that Europe's biggest economy will continue its solid upswing in the next months. Asian markets exhibited mixed trend after the US Federal Reserve raised rates by 25 basis points to a range of 1.5 percent to 1.75 percent on Wednesday, as was widely expected.

Market Turnover & FII Derivative Data

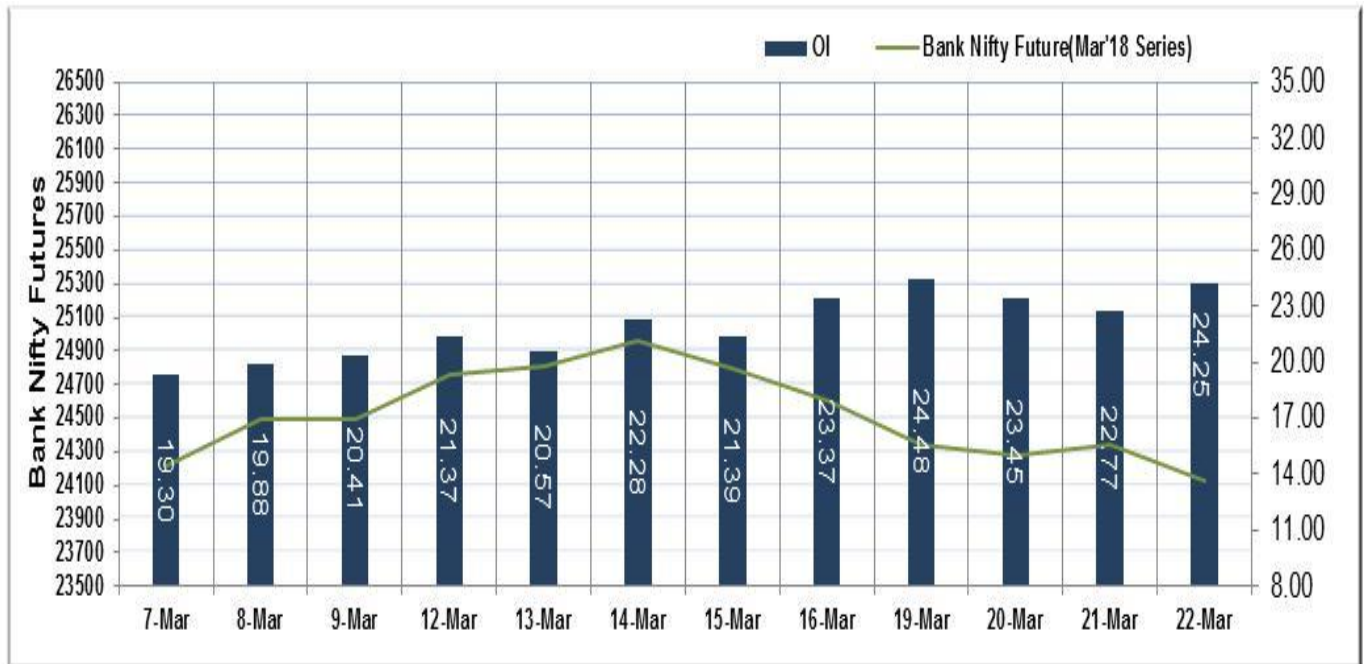
Market TO	Current	Previous	Net%
BSE CASH	3509	3277	7
NSE CASH	27475	28411	(3)
NSE FO	1365419	814332	68

FII Derivatives	Buy	Sell	Net
Ind. Futures	2688	2464	224
Ind. Options	111336	109233	2103
Stk. Futures	10264	9653	611
Stk. Options	5856	5665	191

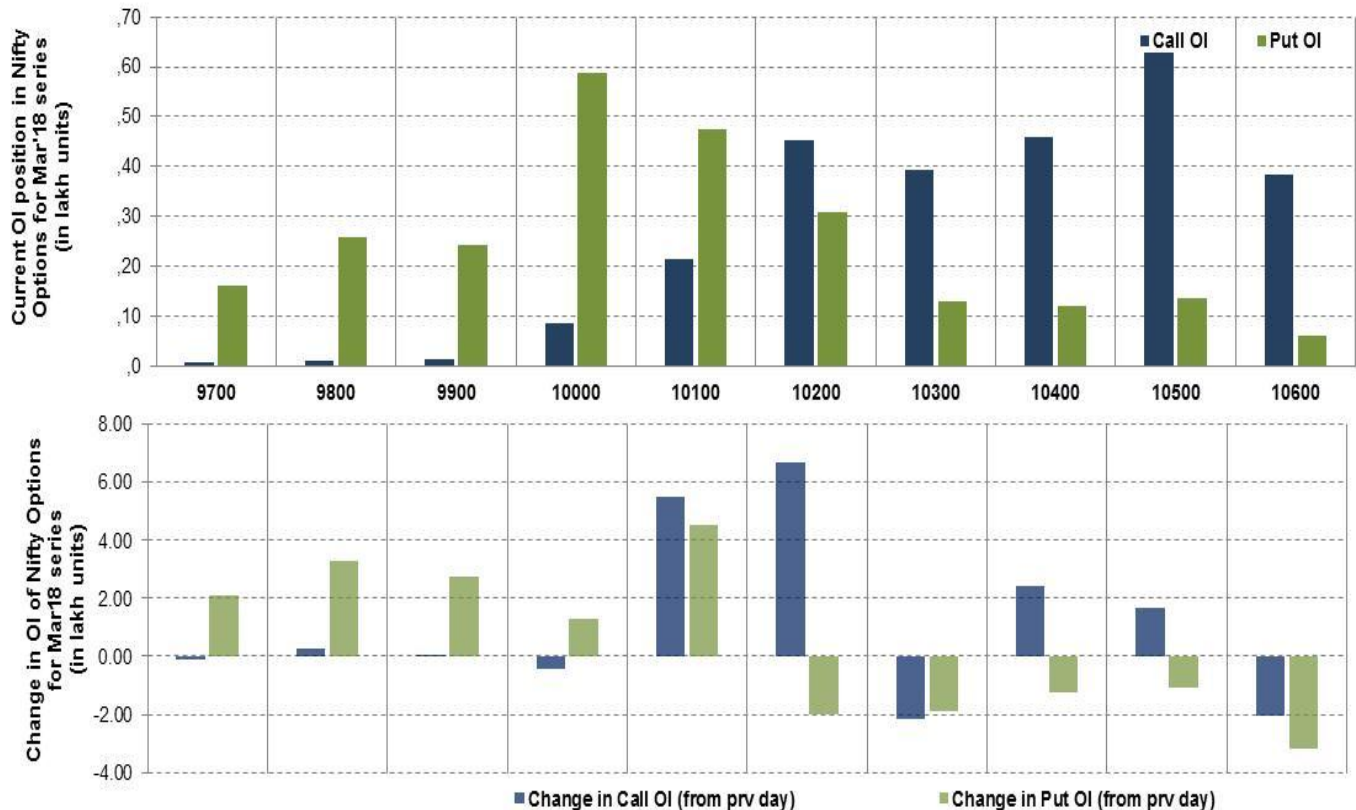
Nifty Futures



Bank Nifty Futures



Nifty Options



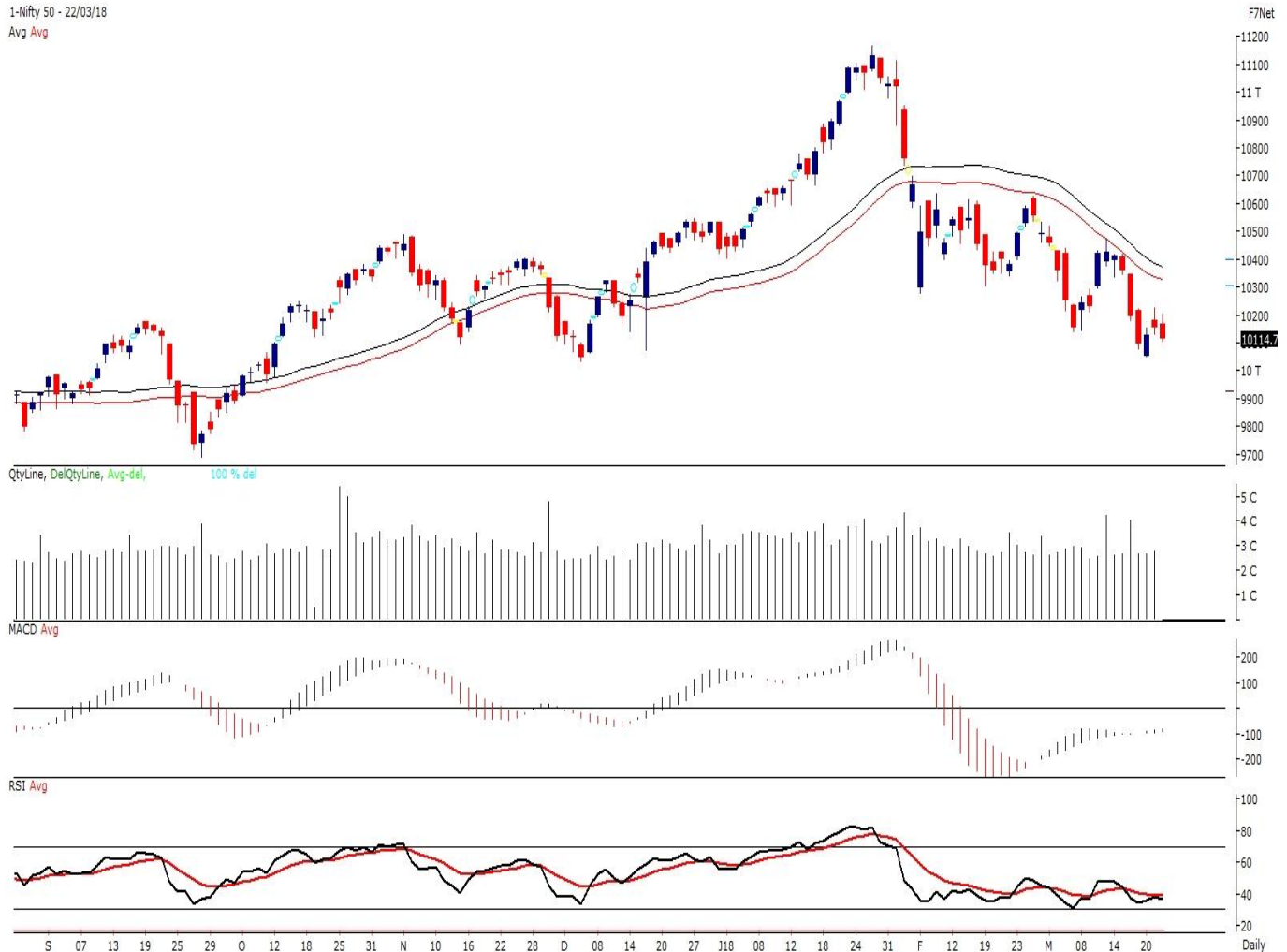
Note – Change in OI of Nifty Options refers to change from previous trading day
 Source-NSE, SIHL Derivatives Research (Institutional Equities)

- Among Nifty calls 10,500 SP from the March month expiry was the most active call with an addition of 0.17 million in open interest.
- Among Nifty puts, 10,000 SP from the March month expiry was the most active put with an addition of 0.13 million open interests.
- The maximum OI outstanding for Calls was at 10,500 SP (6.28mn) and that for Puts was at 10,000 SP (5.88mn)

Nifty Technical & Indices Levels

1-Nifty 50 - 22/03/18

Avg Avg



Nifty Cash prices have settled at 1014.75 down by 0.40% from its previous close. On the upper side it has resistance of 10200 and 10250 levels, while lower side it has support of 10050 and 10000 levels. Intraday traders should be cautious and take position accordingly.

Fresh Longs ↑ Open Interest ↑ Price					
Script	Prev. OI	Cur. OI	% Chg. OI	LTP	Price % Chg
HEXAWARE	4,116,000	4,353,000	5.76	377.00	1.34
NTPC	28,288,000	28,840,000	1.95	170.35	0.26
UBL	1,002,400	1,011,500	0.91	966.05	0.15
BRITANNIA	839,400	844,800	0.64	4854.95	0.04
Short-Covering ↓ Open Interest ↑ Price					
Script	Prev. OI	Cur. OI	% Chg. OI	LTP	Price % Chg
IRB	10,087,500	9,192,500	-8.87	218.95	0.30
GODREJIND	2,172,000	1,971,000	-9.25	529.40	0.68
SUNPHARMA	47,802,700	43,312,500	-9.39	509.60	0.59
BHARATFIN	4,786,000	4,328,000	-9.57	1088.40	0.90
Fresh Shorts ↑ Open Interest ↓ Price					
Script	Prev. OI	Cur. OI	% Chg. OI	LTP	Price % Chg
MINDTREE	1,950,000	2,067,600	6.03	775.60	-2.19
BATAINDIA	2,274,800	2,387,000	4.93	708.35	-0.23
CEATLTD	1,077,650	1,121,400	4.06	1477.05	-2.86
BOSCHLTD	157,400	162,650	3.34	17314.95	-1.42
Long Unwinding ↓ Open Interest ↓ Price					
Script	Prev. OI	Cur. OI	% Chg. OI	LTP	Price % Chg
BIOCON	6,384,600	5,358,600	-16.07	580.90	-0.30
JSWSTEEL	51,780,000	42,117,000	-18.66	287.15	-0.59
HCC	48,270,000	39,195,000	-18.80	23.95	-16.98
INDIANB	3,978,000	3,200,000	-19.56	289.85	-0.51

Disclaimer:

The Information provided by SMS or in newsletter or in any document has been prepared by Shah Investor's Home Ltd (SIHL). The Information provided by SMS or in newsletter does not constitute an offer or solicitation for the purchase or sale of any financial instrument or as an official confirmation of any transaction. The information contained herein is from publicly available data or other sources believed to be reliable, but we do not represent that it is accurate or complete and it should not be relied on as such. SIHL or any of its affiliates/ group companies shall not be in any way responsible for any loss or damage that may arise to any person from any inadvertent error in the information contained in this report or SMS. This Information provided by SMS, reports or in newsletter is provided for assistance only and is not intended to be and must not alone be taken as the basis for an investment decision. The user assumes the entire risk of any use made of this information. Each recipient of this Information provided by SMS, report or in newsletter should make such investigation as it deems necessary to arrive at an independent evaluation of an investment in the securities of companies referred to in this information provided by SMS, report or in newsletter (including the merits and risks involved), and should consult his own advisors to determine the merits and risks of such investment. The investment discussed or views expressed may not be suitable for all investors. This information is strictly confidential and is being furnished to you solely for your information.

The information should not be reproduced or redistributed or passed on directly or indirectly in any form to any other person or published, copied, in whole or in part, for any purpose. The information provided by report or SMS is not directed or intended for distribution to, or use by, any person or entity who is a citizen or resident of or located in any locality, state, country or other jurisdiction, where such distribution, publication, availability or use would be contrary to law, regulation or which would subject SIHL and affiliates/ group companies to any registration or licensing requirements within such jurisdiction. The distribution of this Information provided by SMS or in newsletter in certain jurisdictions may be restricted by law, and persons in whose possession this Information provided by SMS or in newsletter comes, should inform themselves about and observe, any such restrictions. The information given or Information provided by SMS, report or in newsletter is as of the date of the issue date of report or the date on which SMS provided and there can be no assurance that future results or events will be consistent with this information. This information is subject to change without any prior notice. SIHL reserves the right to make modifications and alterations to this statement as may be required from time to time. However, SIHL is under no obligation to update or keep the information current.

Nevertheless, SIHL is committed to providing independent and transparent recommendation to its client and would be happy to provide any information in response to specific client queries. Neither SIHL nor any of its affiliates, group companies, directors, employees, agents or representatives shall be liable for any damages whether direct, indirect, special or consequential including lost revenue or lost profits that may arise from or in connection with the use of the information. Past performance is not necessarily a guide to future performance. The disclosures of interest statements incorporated in the Information provided by SMS, report or in newsletter are provided solely to enhance the transparency and should not be treated as endorsement of the views expressed in the report. The analyst for this report certifies that all of the views expressed in this report accurately reflect his or her personal views about the subject company or companies and its or their securities, and no part of his or her compensation was, is or will be, directly or indirectly related to specific recommendations or views expressed in this report.

About Us:

Shah Investor's Home Ltd (SIHL) is an ISO 9001:2008 Certified financial Services Company established in 1994 at Ahmadabad, Gujarat. Customer satisfaction is guaranteed through our diversified product portfolio, professional management and customer first attitude. SIHL was the first broking house in Gujarat with membership in National Securities Depository Ltd (NSDL) and was the first broking name providing services in NSE F&O in Ahmedabad. Today, SIHL ranks among the top most players in Gujarat in retail stock broking area with 45 branches, 350 franchisee across India and providing service to more than 1,25,000 clients.